

Beadon Avenue, Huddersfield, HD5 8QZ

Fixed Asking Price £230,000

Council Tax Band: B



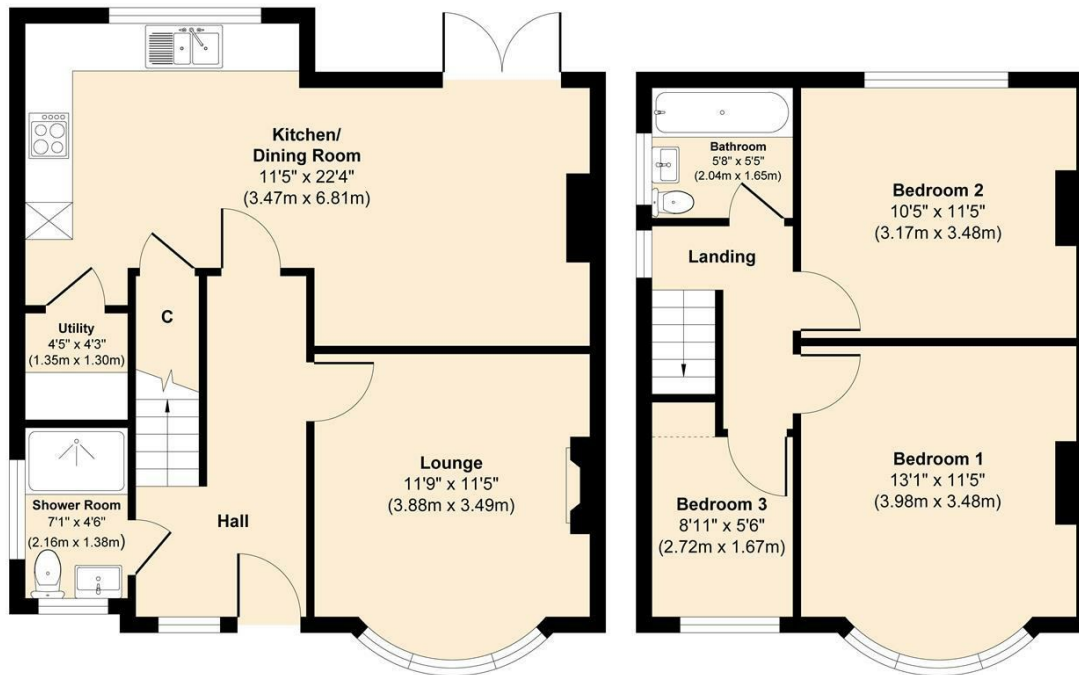
Open House Estate Agents Huddersfield is proud to bring this Extended 3 Bedroomed Semi Detached Property to the Sales Market in the desirable location of Waterloo, in Turn key Ready to Move Into Condition - with NO ONWARD CHAIN/ CHAIN FREE !

The Property has been tastefully decorated with Neutral and Contemporary Decor, with a downstairs extension which has created a Larger Family Kitchen, a Second Full Bathroom to the front, as well as an additional Utility to the rear.

The Property briefly comprises:



Open House Huddersfield



Ground Floor
 Approximate Floor Area
 552 sq. ft
 (51.30 sq. m)

First Floor
 Approximate Floor Area
 397 sq. ft
 (36.91 sq. m)

Approx. Gross Internal Floor Area 949 sq. ft / 88.21 sq. m.

Illustration for identification purposes only, measurements are approximate and not to scale, unauthorised reproduction is prohibited.



Energy Efficiency Rating		Current	Potential
Very energy efficient - lower running costs			
(92 plus)	A		
(81-91)	B		
(69-80)	C		
(55-68)	D		
(39-54)	E	43	56
(21-38)	F		
(1-20)	G		
Not energy efficient - higher running costs			
England & Wales		EU Directive 2002/91/EC	